

QUICKSET QUICK START GUIDE

How to **Install** the
ATQuickset Software



1



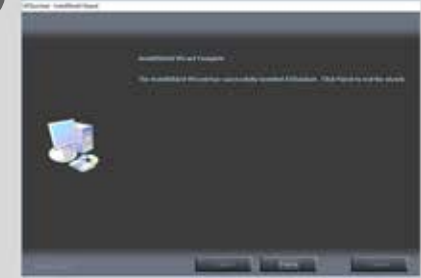
Insert the installation CD into your computer, select "Run". Note: If you do not have the CD that came with the tool, go to ateq-tpms.com, and find the Quickset tool within "Support" to download the software.

2



Once the software loads, click "Install software" and follow the guided screens. Note: if an error message appears asking if you want to install the software, select "Yes".

3



After the software installation is complete, select "Finish".

4



A window will appear to install the remaining software, select "Next" to install and follow the guided screens.

5



A window will appear to install the drivers on your PC, select "Next", then select "Finish" to complete the process.

6



The software is now installed, the ATQuickset software is available as an icon on your desktop.



TPMS Solutions
We turn this  OFF!

QUICKSET QUICK START GUIDE

How to Use the ATQuickset Software

Before You Begin:

- Ensure you have the IDs for the Sensors in the wheels not currently registered with your vehicle.
- Install desktop software from CD provided with your Quickset.
- Make sure to install the software and the driver.
- Launch the Quickset software (ATQuickset icon is located on PC desktop) and follow the on-screen

1



Connect your Quickset tool to your computer via USB cable and open the ATQuickset software.

2



Select "New Vehicle" at the top of the screen. This will open a selection box where you will select the Make, Model and Year of your vehicle. Select "OK".

3



A new dialog box will appear, click "continue", then follow the instructions from the PC, first disconnect the tool from the PC, then more instructions will show to complete the first set of winter or summer tires.

4



After following the on-screen instructions, connect your tool to your computer via USB cable. The instructions will now ask for the season, press summer or winter for the tires that are installed on your vehicle at this moment.

5



Next, the software will instruct you to enter the TPMS sensor ID's for the other season. Follow all on-screen instructions to assist you.

6



Once you have entered the sensor ID's, select "Save to Quickset." On screen instructions will now appear to guide you through the rest of the process.

7



The Quickset should now have programmed to easily switch between winter and summer tires through the OBDII port on your vehicle with a press of either the summer or winter buttons.

help@supporttpms.com

USA (English): **888-621-8767 (TPMS)**
USA and Latin/S. America (Spanish): **210-451-1074**
Canada (English/French): **855-455-8767 (TPMS)**

USA and Latin/S. America: **Monday through Friday, 8 am – 8 pm (EST)**
Canada: **Monday through Friday, 8 am – 6 pm (EST)**

If you run into any problems or receive an error. Please call or email Tech Support.

